



# National Survey Engineering LLC

## GENERAL PROFILE

P.O.Box 24101, Dubai, U.A.E  
Tel: +971-4-3979044  
Fax: +971-4-3979055  
E-mail: [nsedubai@eim.ae](mailto:nsedubai@eim.ae)  
Website: [www.nse.ae](http://www.nse.ae)

*“Professionalism is where we draw the line.”*

# CONTENTS

---



Segment 1	<b>The Company</b>
Segment 2	<b>Scope of Services</b>
Segment 3	<b>Global Positioning System</b>
Segment 4	<b>Topography &amp; Underground Utility</b>
Segment 5	<b>Bathymetry &amp; Side Scan Survey</b>
Segment 6	<b>Seismic Survey</b>
Segment 7	<b>Data Management</b>
Segment 8	<b>Personnel</b>
Segment 9	<b>Surveying Facilities</b>
Segment 10	<b>Project Experience</b>
Segment 11	<b>Quality Assurance</b>



# THE COMPANY



## THE COMPANY

---

We **NATIONAL SURVEY ENGINEERING LLC** are pleased to introduce ourselves as a surveying firm established in April 2004 in Dubai. We have been working with reputed Consultants, Architects, Contractors, Government and Semi-Government organizations.

Having around 35 survey crews equipped with advanced Leica Total Stations, Trimble Total Station and Leica GPS 1200, Leica Viva GNSS, Geo-technical investigation Equipments, we have completed many projects in Dubai, Abu Dhabi, Al Ain , Ajman, Sharjah, Ras Al Khaimah, Umm Al Quwain, Fujairah, Saudi Arabia, Oman, Qatar & Bahrain.

We provide complete solutions to meet the specific needs of our customers, adding new dimensions to images and data to enable engineers, geologists, and managers to access and process information more effectively.

The depth and breadth of our offering gained through years of experience and investment in the latest measuring and mapping technology provides our client with unmatched services, assuring them the highest degree of accuracy, professionalism, and loyalty on hand. Our successful history of project experience and extensive resources enables to provide data solutions for a diversity of challenges.



# THE COMPANY

---

## OUR MISSION

- To provide survey, land and sea information services those are of outstanding quality, on time at a fair price.
- To provide high quality reports/maps.
- To ensure long-term profitable growth.



# SCOPE OF SERVICES



# **SCOPE OF SERVICES**

---

NSE provides a wide range of surveying and data management services.

## **CADASTRAL (LEGAL) SURVEY:**

- Surveyor's Real Property Reports
- Boundary survey
- Subdivision survey
- Stratified Ownership Plans
- Demarcation for plot boundary

## **ENGINEERING & CONSTRUCTION SURVEY:**

- Setting out of pile, foundation and column
- Building Layout
- Pre-design Engineering Survey
- Site Plan Preparation
- As-Built survey for pile, foundation and column
- Structure Monitoring
- Verticality Survey for High Rise Buildings

## **TOPOGRAPHY, UNDERGROUND UTILITY & MAPPING INFORMATION SYSTEM:**

- Road, Railway, Flyover, Bridge & Pipeline
- Irrigation, Hills and Deserts
- Town Planning
- GIS
- Industry & Property

## **HYDROGRAPHY & OCEANOGRAPHY:**

- Bathymetric Survey
- Side Scan Sonar
- Seismic Survey
- Tide Monitoring
- Current Monitoring

## **QUANTITY SURVEY:**

- Stockpile Survey
- Cut & Fill Survey
- Tender Quantity
- Volumetric Survey

## **GEO-TECHNICAL INVESTIGATION:**

- On shore drilling & sampling
- Field & laboratory testing
- Geo-technical studies for earth dams, concrete dams, canals, roads, buildings, power plants, elevated level service reservoir, ground level service reservoirs.
- Dam instrumentation, relief wells, etc.
- Geo-technical mapping



## **SCOPE OF SERVICES**

---

- Investigations, monitoring and analysis of slope stability
- Geo physical studies
- Special geo-technical studies
- Core drilling usually called prospecting studies for mining
- Carry out drilling/ geo-technical investigations off shore by using jack up patrons.

We provide professional and cost effective service for on-site information. Our survey team applies a wide range of expertise and experience gained over the years.

NSE maintains modern drilling equipment which are capable of drilling through soil/ rock and also the sampling equipment which are designed for site investigation purpose.

NSE has also got dynamic field laboratory testing equipment, which includes dynamic cone penetration equipment and also capable of doing grouting, pre grouting and post grouting permeability tests and geo physical instrumentation.





# GLOBAL POSTIONING SYSTEM

# **GLOBAL POSITIONING SYSTEM**

---



The positioning system used for all the major services offered will be GPS (Global Positioning System), which is an all weather, radio based, satellite navigation system that enable users to accurately determine three-dimensional position. The Global Positioning System's primary mission is to provide passive global positioning and navigation for land, air, and sea based strategic and tactical forces. The GPS receiver measures distances between satellites and itself to determine the receiver's position from intersections of the multiple range vectors. Distances are determined by accurately measuring the time, which a signal pulse takes to travel from satellite to the receiver.

The GPS receivers use the satellites as reference points for triangulation their position on earth. The position is calculated from distance measurements to the satellites that are determined by how long a radio signal takes to reach the receiver from the satellite. To calculate the receiver's position on earth, the satellite distance and the satellite's position in space are needed. The satellites transmit signals to the GPS receivers for distance measurements along with the data messages about their exact orbital location and operational status. The satellites transmit two "L" band frequencies for the distance measurement signals called L1 and L2. Minimums of four satellite observations are required to mathematically solve the four unknown receiver parameters (latitude, longitude, altitude and time).

At a known geographical benchmark, one GPS receiver is programmed with the known coordinates and stationed over the geographical benchmark. The receiver, known as the master or reference unit, remains over the known benchmark, monitors the movement of the rover (secondary mobile GPS receiver), and calculates its apparent geographical position. The inherent errors are determined relative to the master receiver's programmed position and the necessary corrections or differences are transmitted to the rover.



# TOPOGRAPHY



# TOPOGRAPHY

---

The RTK GPS502 will be used for establishing a calibration station, correlating benchmarks, and undertaking any required topographic survey in an open area. The RTK system can be operated in either dynamic mode, fixing every second or at a user specified time interval or distance, for topographic survey. Alternatively the system can be used in fast static mode, for detail surveys, occupation times are in the order of a few seconds, or in static mode, geodetic baselines can be observed yielding accuracies of  $\pm 5\text{mm} \pm 1\text{ppm}$ . The system is either deployed by pedestrian in a backpack, with the GPS antenna on a plumbing pole, or is mounted on our eight wheel drive tracked amphibious All Terrain Vehicle (ATV). In less rugged terrain the unit is mounted on a conventional four wheel drive vehicle.

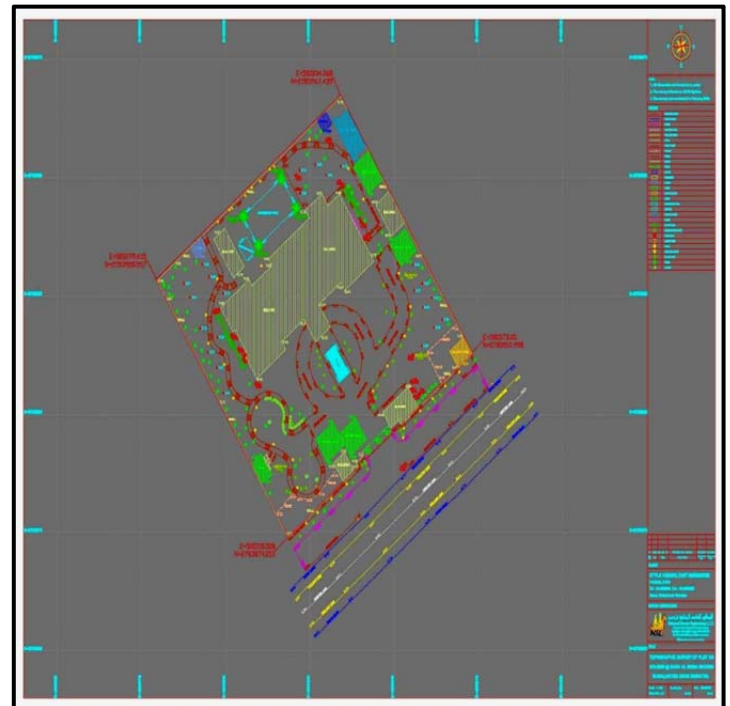
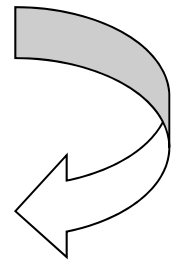
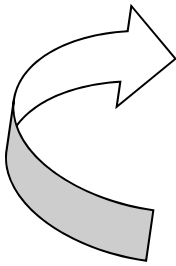
Detail surveys to locate man made features carried out by 'stop and go' pedestrian operations and by total station observations.

Total Station will be employed to survey any areas where satellite coverage is restricted due to obstructions. The equipment will consist of a Leica Total Station and Electronic Notebook observations being recorded on the memory card.





# TOPOGRAPHY





# BATHYMETRY & SIDE SCAN SONAR SURVEY

# **BATHYMETRY & SIDE SCAN SONAR**

---



## **Bathymetry**

Bathymetric data and simultaneously side scan sonar data shall be acquired using a high precision multi frequency Geo Swath multi beam echo sounder.

The mobile DGPS Receiver will interface to the GEO SWATH multi beam echo sounder. The Geo Swath processor receives the depth data and time, synchronized with the GPS position. Thus position and depth data along with date, time will log on the hard disk at one-second intervals. The Geo Swath Sonar transducer array shall be mounted on a pole mount over the bow of the vessel. The DGPS antenna shall be mounted on top of the transducer pole, directly above the Geo Swath 'V' plate, to reduce lever arm offsets. Geo Swath 250kHz transducers, the MRU, the Precision Altimeter and the Mini SVS is mounted on the 'V' Plate. The SG Brown Gyro compass will be secured aligned with the vessel centerline and SVP dips shall be taken as required

The Geo Swath software allows coverage to be monitored in real time, and several data displays are available for the surveyor to maintain a high level of data quality control.

The Geo Swath is supplied with a complete set of software for data collection; calibration, filtering, generation of digital elevation models (DEMs) and side scan mosaics. Data quality control and data visualization tools are an important part of the package. Raw swath data was filtered to remove outliers, sound velocity corrections, tidal corrections were applied and navigation data was checked and edited using the Geo Swath Swath32 software. The calibration parameters is applied to the filtered swath data, giving geo referenced, calibrated data files on a line-by-line basis.

The speed of sound is measured in the beginning and ends of the work by deploying a CTD valeprot 600.

# BATHYMETRY & SIDE SCAN SONAR

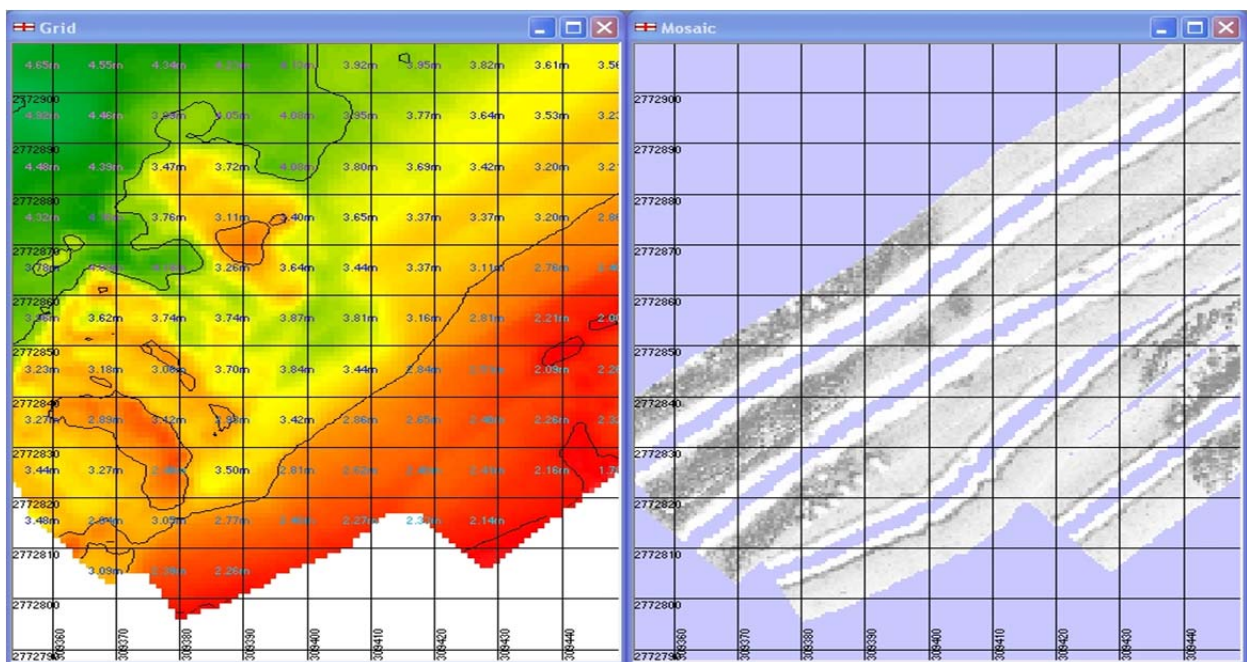


## Sides scan sonar

Built-in side scan sonar in the Geo Swath is used to obtain information on physical features on the seafloor. The side-scan sonar scans the seafloor using acoustic energy.

The different seafloor materials reflect the signals, each in its own characteristic way. For example, fine-grained sediments such as clay or silt are weak reflectors of acoustic energy.

Their acoustic signatures would therefore appear as a lighter shade of grey. Hard, solid objects such as bedrock outcrops are good acoustic reflectors and appear as dark images on the record. The seafloor may therefore be classified in terms of sonograph faces, based on the relative reflectivity of the different materials



Sample of Bathy and Side Scan Sonar of the Survey Area in DEWA



# **BATHYMETRY & SIDE SCAN SONAR**

---



## **Economy of Accuracy**

The International Hydrographic Organization (IHO) Standards, as detailed in S.P. No 44 4th Edition April 1988, are adopted by MME and are used as a minimum standard.

The vertical and horizontal accuracy requirement of the IHO is summarized as follows:

The total error in measuring depths/elevations should, with a probability of at least 90%, not exceed:

- 0.3m from 0 to 30 meters.
- 1% of depths greater than 30 meters.

Primary shore control points in an extensive survey should have relative positions with errors no greater than 0.25 mm at the scale of survey.

The position of soundings, hazards and all other significant features should be determined from field observations, relative to shore control, or directly using satellite positioning such that there is a 95% probability that the true position lies within a circle radius of 1.5m, at the scale of the survey, about the determined position.

.



# SEISMIC SURVEYING

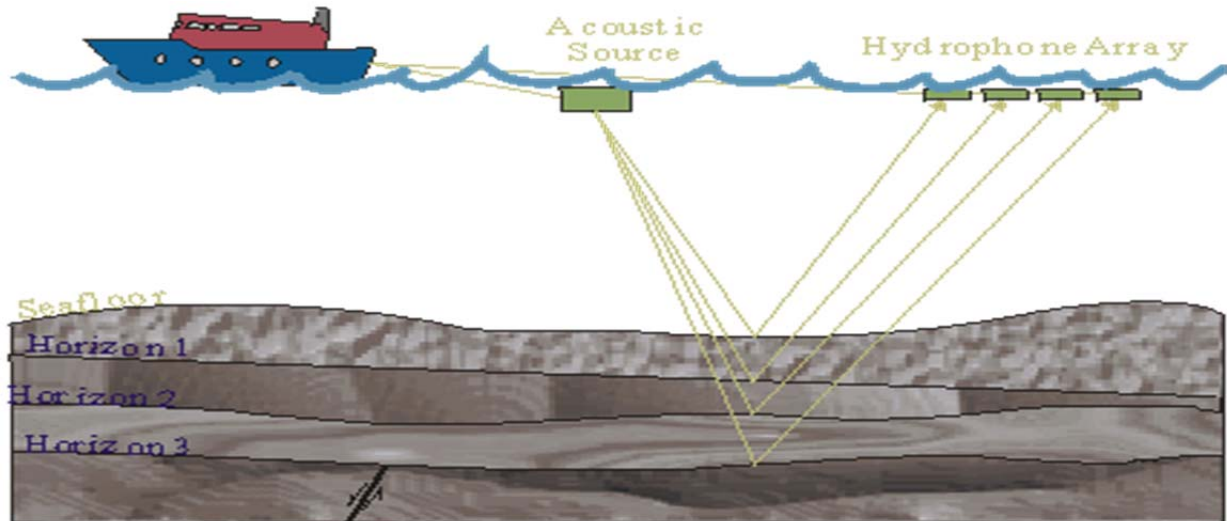


# SEISMIC SURVEYING

## Background to Seismic Surveying

Mechanical disturbance in the water column generates compressional acoustic waves. The signature of the acoustic signal depends on the type of acoustic source. When the acoustic energy is incident on the seabed, it is either totally reflected or partially reflected and transmitted through the sub-seabed depending on the nature of the signal and transmitting medium.

The acoustic impedance results in partial reflection of the acoustic energy. The acoustic impedance is a function of physical characteristics of the sediment. Any change in the physical nature will influence the acoustic transmission and reflection through the sediments. The reflected signals are received by the pressure sensitive transceivers connected to the recording/ processing system. During processing, the raw signals are filtered and amplified to enhance the signal to noise ratio.

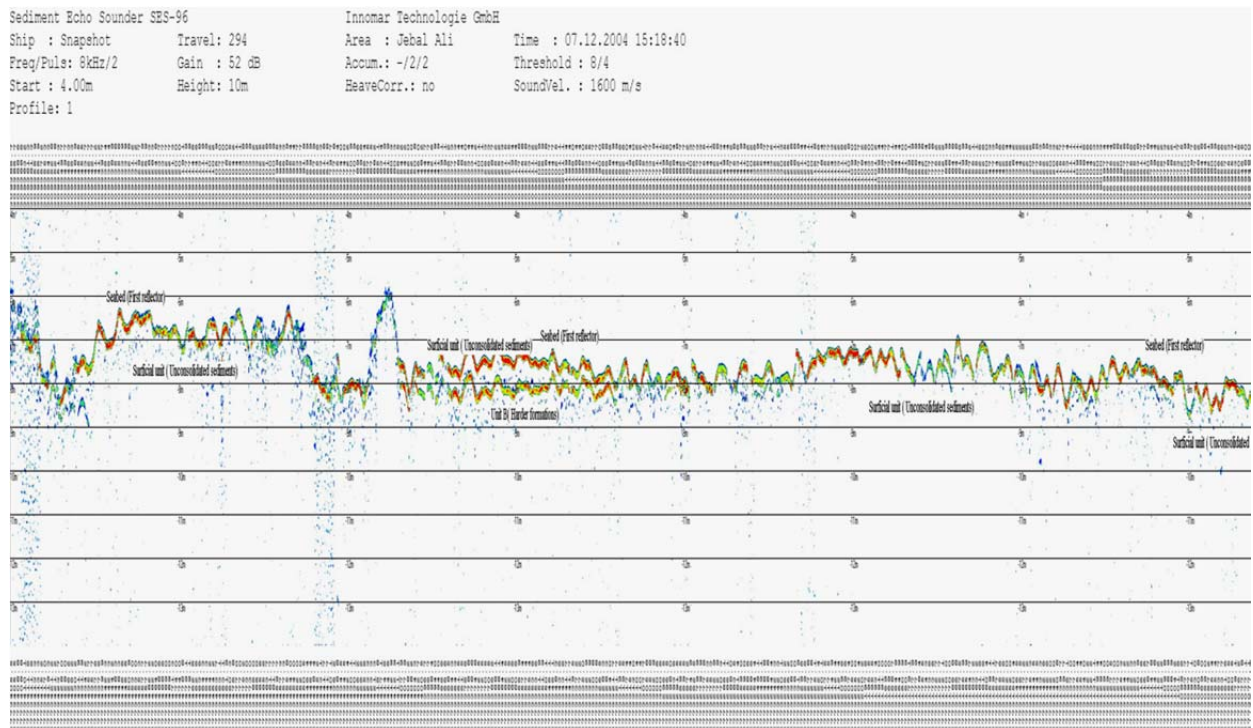


Concept of Seismic

# SEISMIC SURVEYING



A sub-bottom profiling system consists of a sound source which generates a sound pulse at a controlled rate directed towards the seabed by discharging energy stored in a bank of capacitors; a highly sensitive hydrophone, or series of transducers, which pick up the echoes of the sound pulses reflected from the seabed and its underlying layers; a signal receiver section which processes the incoming hydrophone signal through band pass filter, gain control, varied gain control and swell filter, and a high speed graphic recorder capable of converting the signal amplitude levels and print them as grey levels. The sound pulse reflected off the sub-bottom layers when printed in the above manner produces a continuous image of the interfaces between the layers. The different signal signatures generated by various types of geological strata give an indication of the type of material, constituting them in many cases.



**Sample of Seismic data of the Survey Area in DEWA**



# DATA MANAGEMENT



# DATA MANAGEMENT

---



All the data recorded are converted to suitable digital format to suit the specific needs of the clients. Data are converted into clients' preferred digital formats, ensuring data sets that are consistent, accurate and tailored specifically to meet their needs. As an independent surveying house, we are flexible in our approach, adhering to the constraints that apply and specifying a technical solution that fits in with our clients' commercial goals and information requirements.



# PERSONNEL

# PERSONNEL

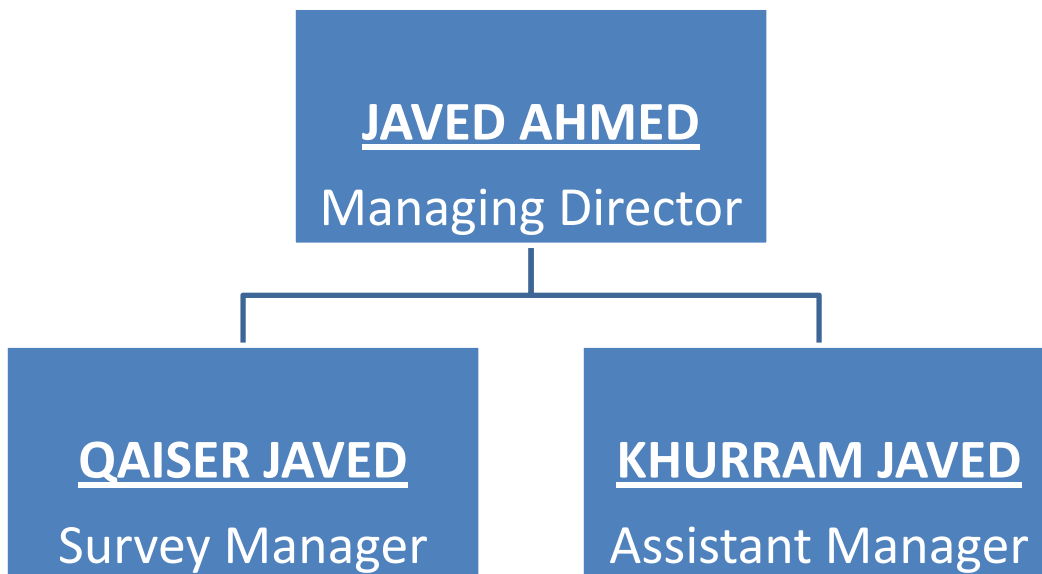
---



Our staffs are highly qualified and experienced in their domain and are well trained. Most of our staff members who have vast experience are one among the front-runners in this field.

We consider our staff as our primary asset and give very much importance to their competence. Only qualified and skilled personnel are hired and they are appraised and trained in their field of activities.

The list of our key staff members is as below.



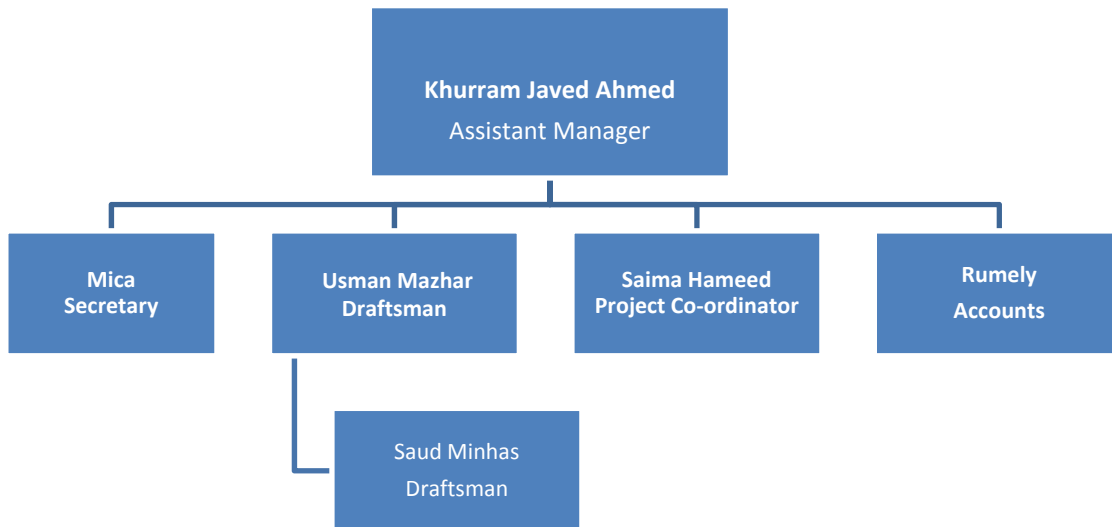


# PERSONNEL

---



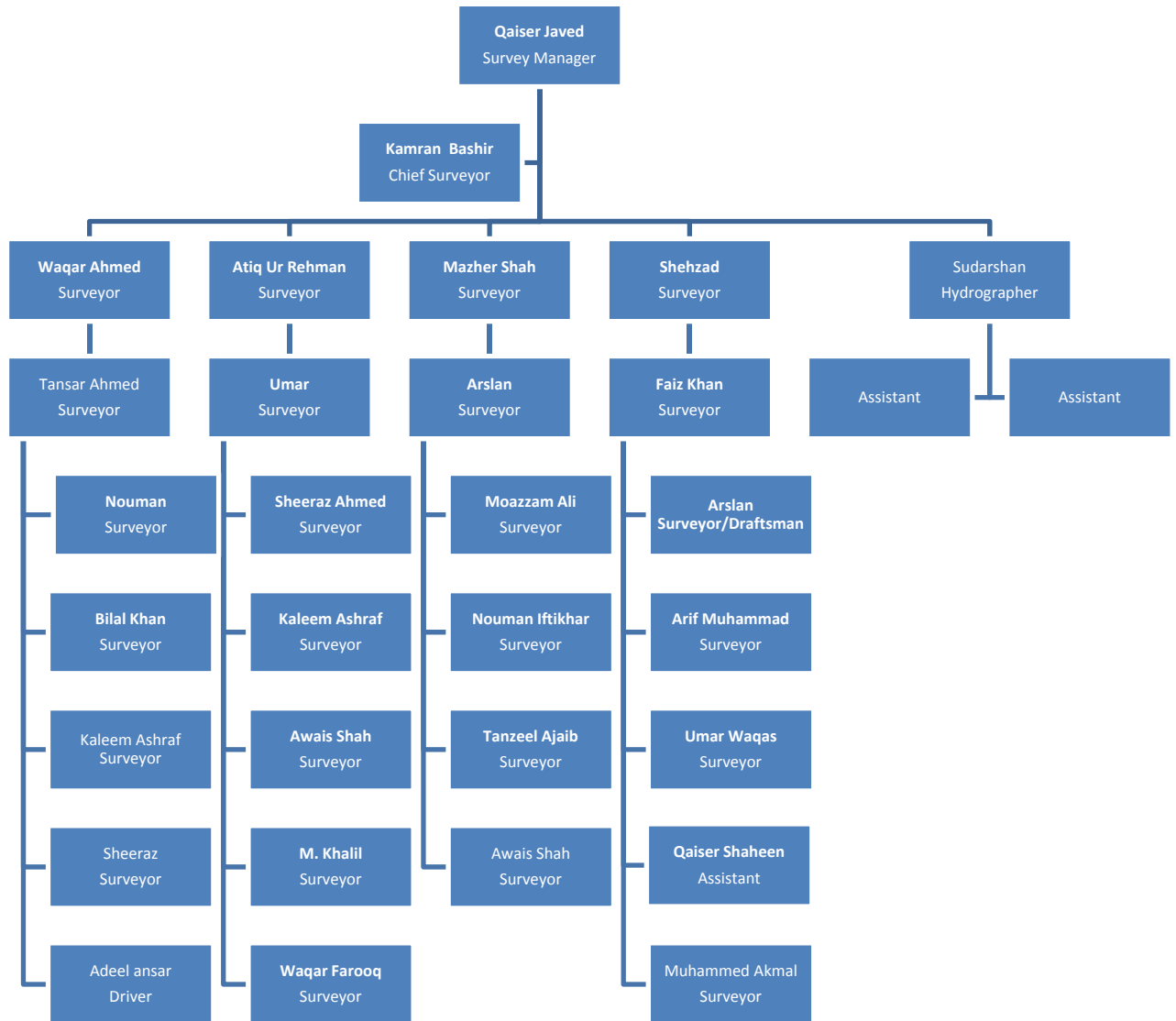
## THE ADMIN. DEPARTMENT



# PERSONNEL



## THE SURVEY DEPARTMENT



# **SURVEYING FACILITIES**

---



SURVEYING  
FACILITIES

# SURVEYING FACILITIES



We use modern and sophisticated equipment for our surveying activities. All necessary equipment required to perform our scope of services are available. All equipment are properly maintained and calibrated prior to use.

Following are the list of equipment available:

## **Global Positioning System**

Leica Viva GNSS	4 No
Leica SR 530 DVRS	1 No
Leica RTK 1200 Dual Frequency GPS Receiver	3 Nos.
Garmin GPS 12	7 Nos.
Kit – DSM232 DGPS/SBAS/Beacon Receiver (Upgradeable)	2 No.
Echo Track High Frequency 210 Khz	2 No.
G886 – Geo Metric Magnetometer	2 No.
Sub Bottom Profiler SES – 2000 Compact	1 No.
Side Scan Sonar – Edge Tech Dual Frequency Towing	
Side Scan Sonar	1 No.
Valeport 740 – Automatic Tide Gauge	1 No.
Valeport 730D – Current , tide and wave Recorder	1 No.

## **Total Station**

Leica TS 11 – 1 Sec Accuracy	6 Nos.
Leica TCRA 1205 Reflector less	5 No.
Leica TC 1205 +	2 Nos.
Leica TC 1102	9 Nos.
Leica TC 705 & Leica TC 805	3 Nos.
Leica TC 1202	2 Nos.
Leica TC 1205	9 Nos.
Trimble 5503DR200+	1 No.

## **Theodolite**

Nikon Electronic	1 No.
Leica T2	2 No.
Leica Plummets	1 No

# **SURVEYING FACILITIES**

---



## **Level Instrument**

Leica NAK 1	15 Nos.
Leica NAK 0	5 No.

## **Underground Utility Survey Instrument**

RD 400	1 No.
RD 4000	1 No.

## **Vehicles**

Toyota Land Cruiser	2 Nos.
Toyota Hilux 4x4	4 Nos.
Toyota Corolla	9 Nos.
CPT Trucks – 4 Wheel Geo Mill Equipment Installed	1 No.
Rotary Machines	9 Nos.
Cable Percussion	5 Nos.

# **SURVEYING FACILITIES**



## **Field Computers**

Hewlett Packard Laptop	4 No.
Sony Laptop	1 No.
IBM Laptop	1 No.

## **Data Processing**

Desktop PC	10 Nos.
NSS Field Data Processing Software	
Leica Survey Office	
Leica Ski- Pro 2.5	
Leica Geo-Office including Post Processing Software	
Liscad 6.2	
Hydropro And Hypack Navigation	
SurPro, Jesi-Editor	
Soft Desk 8	
AutoCAD 2006, AutoCAD 2009, AutoCAD 2014	
Civil 3d 2011	
Micro Station Bentley	
Land Development Desktop 2004.	



**GPS Base Station**



**Total Station**

# PROJECT EXPERIENCE

---



PROJECT  
EXPERIENCE

# PROJECT EXPERIENCE



Over the years we have undertaken various projects from small residential buildings to -  
-- The list of major projects undertaken are provided below:

## TOPOGRAPHIC SURVEYS

EXPO 2020	Dubai World Trade Center
Lego Land	Meraas Development LLC
Abu Dhabi International Airport	Parsons International
Sir Baniyas Island	TDIC
Delma Island	TDIC
Dubai International Airport	Dar Al Handasah
Al Ain International Airport	WSP Middle East
Galiliah Power House	ACTCO
112 Plots @ Jumeirah Garden	Nakheel
147 Plots @ Jumeirah Park	Nakheel
100 Plots @ Wadi Al Amardi, & Al Aweer	Mohammed Bin Rashid Housing
Red Sea Housing	EXPO 2020
Ministry of Infrastructure Building @ Al Twar	Ministry of Infrastructure.
Extension of Deira City Center	Brewer Smith Brewer Gulf
Tawazun Industrial Park	TIP @ Abu Dhabi
Dubai Maritime City – Port Rashid	Nakheel
Dubai Promenade – Jebel Ali	Nakheel
Dubai Waterfront	Nakheel
The Tall Tower	Nakheel
Substation – Hamraniya (RAK)	ACES
Substation – Riffa (RAK)	ACES
Mirdiff Retail Park	ACES
Dubai International Airport – Emirates Engineering	ADPI
Roads & Footpaths in Al Wasl	Al Turath
Fujairah Leisure Resort	Anwar Trading
Palm Jumeirah	Bauer International
Sajaa Wellheads	BP Amoco
Golf & Yatch Club Premises	Dubai Creek Golf & Yatch Club
Dubai Festival City	Emirates Trading Agency
Saqr Port RAK	GHD
Car Park – Dubai Police (Al Qusais)	Jassimco
Jumeirah Palm	Keller
Dubai Creek Golf & Yacht Club	Mirage Mille
Metropolitan Beach Resort	Norr Group
Desalination Plant RAK	Sidem
Desalination Plant Ajman	Sidem





## PROJECT EXPERIENCE

---

New International Airport Ajman  
DEWA Station 'L' Phase 2  
Gulf Water Plant – Hatta  
Dubai Metro (18 Major Stations)  
Desert Rose – Sharjah  
Dubai Crystal Project  
DFC Zone 9 & 14A  
The Cube-Dubai Sports City  
Dubai Aluminium  
Mall Lake Hotel  
Dubai Technology  
Dubai Pearl  
Golf Club  
Dubai International Financial Centre  
Police Sports Ground  
Najda Street in Abu Dhabi

Swissboring  
Swissboring  
Ziki Homs  
Parsons Brinkerhoff  
WSP Middle East  
Dubai Properties  
Dubai Festival City  
BMG Middle East  
Dutco McConnell Dowell  
ACES  
Al Jaber Grinaker-LTA  
ETA-Zeenath  
Dubai Creek Golf & Yacht Club  
Bauer Spezialtiefbau  
Design Center  
E.C.Harris

World Trade Centre Residences  
Fujairah Cement Factory  
SEWA Topography (Layyah Power House)  
SEWA Topography (Layyah Power House)  
Pipeline Survey from Jafza to Airport  
Dubai Properties – Villas  
26Km Road cross sections in Mirdiff  
Topography at DIFC  
Topography at DIFC  
Golf Course at Jabel Ali  
DEWA Jebel Ali  
Dubai Outlet City  
Mega Cargo Terminal, Dubai Airport  
Fence line Survey  
Power House in Ras Al Khaimah  
Cruise Terminal Building, Oman  
Pipeline Route Survey (Jafza to Airport)  
Topographic Survey (900 HA)  
Desalination Plant at Khor Fakkan  
Desalination Plant at Layyah  
Topographic Survey of Al Wasl Road (14.5km)  
Topographic Survey of Al Wasl Road (13.5km)  
Sharjah Investment Park –Roads & Infrastructures  
Ras Al Khor Crossing  
Dubai International Airport Exp Project Phase II

Turner International  
China Harbour  
NEM, Sharjah  
SIDEM, Sharjah  
Mc Connell Dowell  
Al Habtoor Engineering  
PTC  
Geo Consult  
Turner International  
Nakheel  
Pal Technology  
Gulf Spring Contracting  
Siemens  
Al Habtoor Engineering  
ACES  
Teejan, Oman  
Mc Connell Dowell  
Khatib & Alami  
Modern Engineering Consultancy  
Modern Engineering Consultancy  
Cansult Limited  
Cansult Limited  
Cansult Limited  
J & P  
ADPI



## PROJECT EXPERIENCE

---

Topographic Survey in DFC -14 – A  
Topographic Survey in DFC – Quay Wall  
Jebel Ali Airport  
Topographic Survey in JAFZA  
Sky Palace and IPOD  
Al Salam and Al Khalifa Street, AUH  
Al Ain High Way (30 Km)  
Saadiyat Island  
Topographic Survey at Wadi Al Amardi  
Topographic Survey at Jumeirah Island  
P 604 FZ LIU 10, 11, 13 & 14 @ JAFZA  
Mountain in Kalba, Fujairah  
Sheik Zayed Rd (approx.16km)  
Al Zorah Parkway Road  
Plot No.44 Al Nakheel B, Ajman  
Lotus Towers in Business Bay  
British Embassy Office  
Dubai World Trade Center

Dubai Festival City  
Dubai Festival City  
Kharafi National  
Exomos  
Gardiner & Theobald  
EC Harris International  
Engineering Associates  
Gulf Leighton  
DSA Architects  
Nakheel  
Consultant HSS  
WSP Middle East  
Al Zorah Development  
Al Zorah Development  
Badri & Bensouda  
Damac Properties  
The British Embassy  
Hopkins Architects

Khalid Lagoon Foot Bridge, Sharjah  
Mushrif Heights  
3 Plots at Al Muraqabbat  
East Car Park  
Dubai Investment Park  
Al Mina Project  
Gulf Petrochem Project-Fujairah  
Gas R/A 14E in Sharjah  
Jumeirah Hills  
8 Plots for Dubai Rail  
Plots in Majan & Arjan  
Salwa Quarry in Fujairah  
Emirates Tourism Village  
Madinat Al Arab  
Jumeirah Park  
Auto Zone Sharjah  
Blue Bay Tower  
Dubai Water Front  
Downtown Jebel Ali  
84 Villas at Al Khawaneej  
Dubai Beach Sports Complex  
Dubai Waterfront Project  
Dubai Waterfront Project  
Le Meridien Hotel at Al Garhoud

WSP Middle East  
Emaar Properties PJSC  
Al Ghurair City  
Al Ghurair City  
Al Nibras Management  
Dubai Real Estate Corporation  
ACES  
WSP Middle East  
LACASA  
Spectrum Real Estate  
Tameer Holding Investment  
Caspian Group  
Heilbronn Contracting  
Al Hai & Al Mukaddam  
Veritas Global FZE  
Khatib & Alami  
Saile Construction LLC  
Cracknell  
Dewan Al Emara Architects  
Bhatia General Contracting Co.  
Dubai Sports Council  
Ramee Real Estate  
Planquadrat Middle East  
Dubai Real Estate Corporation



## PROJECT EXPERIENCE

---

Kalba Commercial Area

Kalba Industrial Area

Military Head Quarters at Western Region

Deerfields Town Square in Abu Dhabi

ADMC TV Offices in Abu Dhabi

Kalba Ice Factory

Al Ghweifat Border

Maliha Industrial Area

Rahmaniya 9 & 10 in Sharjah

Zayed National Museum @ Saadiyat Island

Shibaat Al Watta (4.5 Km X 4.5 Km)

Sir Banyas Island – 28Km

Al Daher 5(3.5 km X 4 Km)

Deira City Center

Al Ain Hili Fun City

Meydan Gated Community

WSP Middle East

WSP Middle East

Mott MacDonald

Deerfields Town Square LLC

Al Masaood Bergum

Sharjah Ruler's Office

Musanada

WSP Middle East

WSP Middle East

NSSC

Al Ain Municipality

TDIC

Al Ain Municipality

Majid Al Futtaim

Kling Consult

Meydan / TAK

Dubai Metro Green Line Zone 4C

Southern Sun Hotel @ AUH

Madam Industrial Area

Meydan Heights

Chemoil Phase IV Terminal @ Fujairah

Al Fattan Hotel & Residence

Dhaid Industrial Area

P 116 @ Western Region – Zayed City

Emirates Aluminium Smelter Complex

Bu Krayyah Park @ Al Ain

Al Safran @ Abu Dhabi

Abu Dhabi International Airport

L Station @ DEWA

HH Sheikh Mohammed's Villa @ Jumeirah

Al Sarooj Rest House

Jumeirah Beach Residences

Jebel Ali Power Plant

American University of Sharjah

Al Falah City

Dubai Radio & TV

Chemical Storage Facility @ JAFZA

Dubai Airport Free Zone

Desalination Plant at RAK

Al Dhaid Prison, Sharjah

Dubai Maritime City

Toledo

China State Construction Engg.

WSP Middle East

Meydan

Topaz Engineering

Al Fattan Engineering

WSP Middle East

Tameer Engg Consultant

EMAL

Ecoscape Agricultural Consultant

GHQ Armed Force

Parson International

Swissboring

Engineer's Office

TDIC

Arenco

Siemens Energy

Al Hai & Al Mukaddam

WSP Middle East

Pioneers of Experts

ACES

LACASA

GeoScience Testing Laboratory

Schuster Pechtold

Swissboring



## PROJECT EXPERIENCE

---

Buhasa-Bab Road, AUH  
Jebel Ali Hotel Marina Redevelopment  
Palm Tree Courts & Spa, Jebel Ali  
Yas Marina, Abu Dhabi  
Al Sharu for Al Ain University  
The Avenue @ Al Safa  
AD Al Hafar - Abu Dhabi  
Jumeirah Golf Estates  
Dragon Mart, Al Warsan  
Dubai World Central  
Zabeel Palace  
Area 001 & 005 at Palm Deira  
Al Wasl Sports Club  
Geo Science Testing Laboratory  
Sheikh Md Bin Rashid Gardens  
Dubai Polo Club & Golf Course  
Dubai Theme Park at Jebel Ali  
Meydan Gated Community  
Al Seouh Area 9-16 – Sharjah  
Sharjah City Center Expansion  
NAS Indoor Futsal & Volleyball Arena  
SHA Desert Residences & Wellness Spa  
Baniyas EB-11 Project  
Dubai World Trade Centre District - Phase I  
Coca Cola Factory Al Ain  
6 Hotels for Dubai Inn  
Shankland Cox. Ltd.  
EXPO 2020  
Lego Land  
Abu Dhabi International Airport  
Sir Baniyas Island  
Delma Island  
Dubai International Airport  
Al Ain International Airport  
Galiliah Power House  
112 Plots @ Jumeirah Garden  
147 Plots @ Jumeirah Park  
100 Plots @ Wadi Al Amardi, & Al Aweer  
Red Sea Housing  
Ministry of Infrastructure Building @ Al Twar  
Extension of Deira City Center  
Tawazun Industrial Park

Alstom Grid  
Al Hai & Al Mukaddam  
Al Hai & Al Mukaddam  
Al Hai & Al Mukaddam  
Design Center  
Dewan Al Emara Architects  
Tameer Engineering Consultants  
Access Engg Consultancy  
ACES  
Gleinbeigh Ratoga JV  
Engineer's Office  
Dutco Balfour Beatty  
Universal Piling Company  
Desalination Plant at Gallilah  
Dar Al Handasah  
Meraas Development LLC  
Riva Parks LLC  
Chawla Architects  
WSP Middle East  
Al Hai & Al Mukaddam  
Dar Al Handasah  
Meraas Development LLC  
WS Atkins  
Dubai World Trade Center  
Al Ahlia Gulf-Line Gen.  
Arch Group Consultants  
Al Manar Mall at RAK  
Dubai World Trade Center  
Meraas Development LLC  
Parsons International  
TDIC  
TDIC  
Dar Al Handasah  
WSP Middle East  
ACTCO  
Nakheel  
Nakheel  
Mohammed Bin Rashid Housing  
EXPO 2020  
Ministry of Infrastructure.  
Brewer Smith Brewer Gulf  
TIP @ Abu Dhabi

# PROJECT EXPERIENCE



## DEWA PROJECT

SNC Lavalin International	Jeyad
Areva T & D	132/11kv Substation @ al Kifaf
Alstom Grid	346-6821
Alstom Grid	346-6856
Siemens	400 KV "L" Station @ Jabel Ali Power Plant
Areva T & D	DEWA "L" Station @ Jebel Ali
Alstom Grid	DOZ,C3.005A
Alstom Grid	DOZ-UT-003
Siemens	Dubai Janoub @ DWC
SNC Lavalin International	Forsan
Siemens	HASSYAN COAL
Larsen & Toubro Limited	IBN 132/11 Kv SS
Siemens	Jebel Ali Power Station
SNC Lavalin International	Mahra
Siemens	MRNAHRBR
Areva T & D	Plot @ Jumeirah Golf Estate
Emirates Electrical Engineering LLC	Plot @ Nadd Al Shiba 1st
Siemens	Plot @ SEYAHIST Site
Siemens	Plot No 118-1316 @ Naif
Larsen & Toubro Limited	Plot No 125-142 @ Riggat Al Buteen
Larsen & Toubro Limited	Plot No 214-537 @ Al Garhoud
Larsen & Toubro Limited	Plot No 234-3674 @ Al Qusais 3 <sup>rd</sup>
Larsen & Toubro Limited	Plot No 281-4135 @ Al Khwaneej 1 <sup>st</sup>
Larsen & Toubro Limited	Plot No 323-668 @ Mankhool
Siemens	Plot No 334-7499 @ Garden City
Siemens	Plot No 337-2212 @ Zaa'beel 2 <sup>nd</sup>
Larsen & Toubro Limited	Plot No 343-5341 @ Al Wasl
Larsen & Toubro Limited	Plot No 346 – 162 @ Al Wasl
GE Grid Solutions	Plot No 355-5846 @ Al Quoz 2 <sup>nd</sup>
Siemens	Plot No 366-491 @ Umm Suqeim
Larsen & Toubro Limited	Plot No 368-9082 @ Al Quoz Ind. 3 <sup>rd</sup>
Siemens	Plot No 392-7051 @ Al Seyahi
GE Grid Solutions	Plot No 415-4926 @ Dubai Creek Harbour
Emirates Electrical Engineering LLC	Plot No 415-4927 @ Al Kheeran 1 <sup>st</sup>
Larsen & Toubro Limited	Plot No 599-7760 @ Jebel Ali
Siemens	Plot No 622-150 @ Warsan
Siemens	Plot No 648-9269 @ Wadi Al Safa 5
Siemens	Plot No 711-6920 @ Al Awir 1 <sup>st</sup>



## PROJECT EXPERIENCE

---

Siemens	Plot No 922-8917 @ Al Yalays 2
Siemens	Plot No A/P15 @ Dubai Healthcare City
GE Grid Solutions	Plot No DG-SS-400 @ Jabal Ali 1 <sup>st</sup>
GE Grid Solutions	Plot No DG-SS-400 @ Jebel Ali 1 <sup>st</sup>
Areva T & D	Plot No LG.SS.01 & LG.SS.02 @ Sama Dubai
Siemens	Plot No SS-1 & SS-3 @ Marsa Dubai
Siemens	Plot No. 337-2476 @ Zaa'beel 2 <sup>nd</sup>
Larsen & Toubro Limited	Plot No. 347-9421 @ Al Merkadh
Areva T & D	Plot No. 384-115 @ Al Medhmar
Larsen & Toubro Limited	Plot No. 513 – 1519 @ Saih Shuaib 1
Areva T & D	Plot No. 612-493 @ Ras Al Khor Ind. 1
Emirates Electrical Engineering LLC	Plot No. 618-4164 @ Nadd Al Shiba 1 <sup>st</sup>
Larsen & Toubro Limited	Plot No. 922-8917 @ Al Yalays 2
Areva T & D	Plot No. DMC-SS3 & DMC-SS2 @ Dubai Maritime City &
Larsen & Toubro Limited	Plot No. IBS-SS-01 @ Ibn Battuta Mall
Larsen & Toubro Limited	Plot No. JVC10SSC5 @ Jumeirah Village Circle
Larsen & Toubro Limited	Plot No. JVC10SSC5 @ Jumeirah Village Circle
Areva T & D	Plot No. JVC-SSC4 @ Jumeirah Village
Areva T & D	Plot No. JVC-SSC4 @ Jumeirah Village &
Larsen & Toubro Limited	Plot No. MPS#6 @ Jumeirah Golf Estates
Larsen & Toubro Limited	Plot No. MPS#6 @ Meaisem 1 <sup>st</sup>
Larsen & Toubro Limited	Plot No. NS-R-ESS-01 @ Nad Al Shiba
Siemens	Plot No. SS1, SS3 & SS9 @ Palm Deira.
Larsen & Toubro Limited	Plot No. SS-2 @ Dubai Harbour
Areva T & D	Plot No.132/11 KV S/S @ Jumeirah Golf Estate
Areva T & D	Plot No.JVN-SS2 @ Jumeirah Village North
GE Grid Solutions	Project 132/11KV Keranola Substation @ Dubai Creek Harbor
GE Grid Solutions	Project 400/132 KV Canal Gardens Substation @ Discovery Gardens
GE Grid Solutions	Project 400/132KV Canal Gardens
GE Grid Solutions	PSS-A, 415-4926
Larsen & Toubro Limited	Qanat Substation @ Dubai
Siemens	Series Reactor
Siemens	SRS GD @ Dewa
Larsen & Toubro Limited	Substation @ Jebel Ali Horse Course
Larsen & Toubro Limited	Yalays Substation



# PROJECT EXPERIENCE

---

## DEMARCATIION SURVEYS AT JUMEIRAH VILLAGE, PLAM JUMEIRAH, JAFZA

Al Faraa' Properties	3 Projects
Al Farren and Partners	JVC 12 QFRP 003
Al Shafar General Contracting	JVC 15B MRA 500
Bavaria Gulf Sandoval Limited	6 Projects
Consolidated Project Management	16 Projects
Cosmos Piling Contracting	2 Projects
Dartin Engineering	5 Projects
Edmac Consulting	2 Projects
Emirates Engineer Consulting Engineering LLC	JVC120MRP004
High Rise Real Estate	5 Projects
International Foundation Group	JVC 130 MRP 004
Jeet Contracting	4 Projects
Lacasa Architects and Engineering Consultants	16 Projects
Mazaya Consulting Engineers	JVT 04K HRA 0003
NAGA Architects Designers Planners	2 Projects
National Engineering Bureau	2 Projects
Saleh Bin Lahej Real Estate	4 Projects
Saleh Bin Lahej	JVC 12 NHR S 003
Sobha Contracting	JVC 13 CMRM 400
Westar Properties	2 Projects
William and Jones	3 Projects
World Wide Project Management	5 Projects
East West Building Contracting LLC.	JAFZA
Comfort House Contracting LLC	JAFZA
Techno Steel Construction Co. LLC	JAFZA
Arcade Star Construction LLC	JAFZA
Metrotec Engineering LLC	JAFZA
Strength Contracting Company	JAFZA
Toscana Landscaping	Palm Jumeirah
National Engineering Bureau	Palm Jumeirah
Palace Group LLC	Palm Jumeirah
Lora Bergiy Design LLC	Palm Jumeirah
Dynamic Engineering Consultants	Palm Jumeirah
Al Habtoor STFA Soil Group	Palm Jumeirah



# PROJECT EXPERIENCE

---



## DEMARICATION SURVEYS at Different Locations

Abdul Rahim Arch Consultant	Residential City
Adnan Saffarini	Dubai
Al Ard Properties	Jumeirah Lake
Al Fara'a Properties	Jumeirah Lake
Al Futtaim Carillion	Hamriya Port
Al Kazim Group	Nadd Al Shibba
Al Masaoood Bergum	Saadiyat Island
Al Mazrouei Bowyer Building	JAFZA
Al Mazrouei Bowyer Building	Tecom
Al Nahda Bldg. Cont.	JAFZA
Alibaba Sign & Advertising	Dubai Land
Arabia Group	Al Garhoud
Archen Engineering Consultant	Al Thanyah Fifth
Arkiplan Consulting Architects	Nad Al Shibba
Belhasa Projects	Jebel Ali
BJA Contracting LLC	Dubai Logistics City
Chawla Architects	Dubai Land
China State	Abu Dhabi
Condor Building Contracting	Mizin
Consortio International	Grand Fort Hotel
Delhi Private School	Dubai
Delta Engineering Consultants	International City
Design Concepts	Design Concepts
Diploma Group LLC	Al Quoz
Doosan	Jebel Ali
Dubai Lifestyle City	Dubai Land
Dubai Properties	Dubai Land
Dubai Sports Council	Beach Sports Complex
Dutch Foundation	Umm Ramool
Emirates Engineer Consulting Engineering LLC	Saih Shuaib Fourth
Engineering Contracting Co.	Nad Al Shibba
EPG Management FZE	Business Bay
ETA Star Project	Arabian Ranches
Fujairah National Construction	Jebel Ali
Geo Science Testing Laboratory	Techno Park
Geo Science Testing Laboratory	Nad Al Shibba
Geomar Gulf LLC	Al Karama
Geomar Gulf LLC	JAFZA





## **PROJECT EXPERIENCE**

---

Green Scape Contracting

Gulf News

Harsha Contracting

Heilbronn Contractor & Developers

IBR Steel Construction & Cont. LLC

IBR Steel Construction & Cont. LLC

Kele Contracting LLC

Kharafi National

Lacasa Architects & Engg. Consultants

Leighton Contracting Co

Logical Contracting LLC

Logical Contracting LLC

Logical Contracting LLC

Mammut Contracting

Matrix Laboratory

Metito Overseas Ltd

NAFFCO

Nakheel

National Piling

National Piling

National Projects & Construction

OBE Architects

Scope Engineering Consultant

Shank Land Cox Ltd

Stride Construction Co. LLC

Style Consultant

Tanmia Properties

Tourism Development & Investment Co.(TDIC)

Towers Foundation

Turner International

Woods Bagot

Nadd Al Shiba 4th

Dubai Investment Park

Dubai Investment Park

Dubai World Central

JAFZA

Techno Park

International City

Jebel Ali Airport

Al Muteena

Ras Al Khaimah

Sama Dubai

Abu Dhabi

Dubai Waterfront

Jebel Ali

Techno Park

International City

Jebel Ali

Tall Tower Dubai

Business Bay

Abu Dhabi

Abu Dhabi

International City

Saih Shuaib Fourth

Umm Al Quwain

Techno Park

Nad Al Shibba

Jumeirah Lake

Sir Baniyas Island

Dubai Sports City

Dubai Maritime City

Sheikh Zayed Rd

## **BATHYMETRIC SURVEYS**

Abu Dhabi Ship Building

ACES

ACES / Maunsul

Al Fattan Engineering

Al Zorah Development

APCC

Mussafah Channel Area

DEWA Plant "G" Station

Bathymetry in Jebel Ali

Al Fattan Hotel & Residence

Channel Area @ Ajman

Fisherman Port-Taweelah

# PROJECT EXPERIENCE

---



Arab Center for Engineering Studies  
Beach Resorts  
China Harbour  
China Harbour  
China Harbour  
China Harbour  
Clement System Gulf  
Dutco Balfour Beatty LLC  
Dutco Balfour Beatty LLC  
Dutco Balfour Beatty LLC  
Ghantoot General Contracting  
Geo Science Testing Laboratory  
GHD  
GHD / AL Jaber  
Khatib & Alami

Ministry of Electricity and Water Directorate  
Mott Macdonald  
Nakheel  
Oman Ministry of Water  
Sidem  
Sidem  
Soletanche Bachy  
Soletanche Bachy  
TDIC  
Wonder Bus Tours  
WSP Middle East

Palm Jumeirah Plot  
Wudam Beach (4km X 2 km)  
Khalid Lagoon, Sharjah  
Port Arabia in Ras Al Khaimah  
Saqr Port in Ras Al Khaimah  
Dibba Port  
Jumeirah Harbour  
Al Bandar, Al Raha Beach  
Al Dana, Raha Beach  
Area 001 & 005 @ Palm Deira  
Al Ghoumais, Al Ruwais  
Desalination Plant at Gallilah  
Mangrove Village, Abu Dhabi  
Module Load Out Quay in Mussafah  
Hamriyah Free Zone Channel,  
Hamriyah , Sharjah  
Nizwa to Adam (62km X 50 Km)  
Hassyan (NearJebel Ali Palm Island)  
Dubai Promenade, Jebel Ali  
Manoomah Village Muscat(500mX 5km)  
Desalination Plant Ajman  
Desalination Plant RAK  
Naval Base -CMW Jebel Ali Project  
Naval Base CMW Abu Dhabi Project  
Sir Baniyas Island (1700 HA)  
Survey of Dubai Creek  
Khalid Lagoon Foot Bridge

# PROJECT EXPERIENCE



## STATIC SURVEY, CONSTRUCTION SETTING-OUT AND MONITORING

Al Naboodah Laing O'Rourke  
Al Naboodah Laing O'Rourke  
Al Naboodah Laing O'Rourke  
Al Naboodah Laing O'Rourke  
Al Nasr Engineering  
Al Nibras Management Consultancy  
Arab Center for Engineering Studies  
Arab Tec & Al Rostamani  
Arabtec & Al Rostamani  
ASTCC  
Bauer International  
Bin Ladin Contracting  
Castle Construction  
CCC  
Deepa Interiors  
Dubai World Trade Centre  
J & P  
GHD  
Group 5 Construction  
Guardian R.A.K.  
Guris and ACD JV  
International Foundation Group  
Jebel Ali Properties  
Metac Gen.Contracting  
Mirage Mille  
Puma Engineering  
Puma Engineering  
Puma Engineering  
Rasana Engineering  
Rasana Engineering  
Siemens (SDME)  
Siemens (SDME)  
Swissboring  
Swissboring  
Thyssenkrupp Lift & Elevators

Dubai Int'l Airport Expansion  
Dubai Autodrome  
Dubai Int'l Airport - DCA Engg  
Souk AL Nakheel - Snow Centre  
Dubai Int'l Airport III  
Al Quoz Land Development  
Abu Dhabi Bridge  
21st Century Tower  
Al Fattan Towers  
Emaar Headquarters  
Burj Dubai  
Beautification of Jumeirah Roads  
Hotel Development, Deira  
DEWA Station 'L' Phase 2  
Dubai Int'l Airport III  
DWTC Development Phase I  
Dubai Int'l Airport Expansion  
BP Amoco Wellheads  
Dubai Duty Free Shop  
Glass Factory In Ras Al Khaimah  
Motor City  
Dubai Pearl  
JAFZA Container Terminal  
Jumeirah Lake Towers  
Madinat Jumeirah  
Dubai Autodrome  
Al Fattan Towers  
Sharjah Airport  
Dubai Sports City  
Business Bay  
Dubai Int'l Airport III  
Dubai Airport Mega Terminal  
Al Sowa Island-AUH  
Yas Island-AUH  
Dubai Int'l Airport III

# PROJECT EXPERIENCE

---



## **BUILDING AND VERTICALITY SURVEY WORKS**

ADPI Design & Planners  
ADPI Design & Planners  
Adyard Abu Dhabi LLC  
Al Habtoor Leighton  
Al Naboodah Laing O'Rourke  
Al Naboodah Laing O'Rourke  
Al Naboodah Laing O'Rourke  
Al Naboodah Laing O'Rourke  
Al Nasr Engineering  
Al Rahji Projects  
Al Rahji Projects  
Arab Tec & Al Rostamani  
Arabtec & Al Rostamani  
Dubai Contracting Company  
ETA Star Property Developers  
FAMCO  
Metito (overseas) Ltd.  
Oger Abu Dhabi  
Taisei Corporation  
Turner International

Jebel Ali Airport  
Dubai Airport Terminal 2  
Abu Dhabi Project  
Dubai Pearl  
Dubai Int'l Airport Expansion  
Dubai Autodrome  
Dubai Int'l Airport - DCA Engg  
Souk AL Nakheel - Snow Centre  
Dubai Int'l Airport III  
Regal Tower – Business Bay  
Imperial Residence - Jebel Ali  
21st Century Tower  
Al Fattan Towers  
Sama Tower- Sheik Zayed  
Al Manara Tower – B. Bay  
Dubai Airport Mega Terminal  
Dewa Project  
Al Ain University  
Downtown Jebel Ali  
World Trade Center Residences

## **BUILDING SURVEY**

Al Nasr Leisure Land  
Arab Centre For Engineering Studies  
Bloom Properties  
Dar Consult  
Fujairah Rock & Aggregates  
Musnada  
RMJM  
Sharja Ruler's Office  
Tahpi Pty Ltd

The Lodge  
Dubai Aviation College  
Al Mankhool Building  
Al Nasr Cinema  
Crusher Plant in Fujairah  
Al Ghweifat Border  
Ruler's Palace Sharjah  
Kalba Ice Factory  
MAF Polyclinic-Deira City Center

# PROJECT EXPERIENCE

---



## VOLUMETRIC SURVEY

Al Ain Cement Factory  
Al Ain Cement Factory  
Al Ghurair Construction  
Al Nakhla Crusher  
Al Qersh Contracting Company  
Al Rawasi Rock  
Al Salwa Crusher  
Al Shuwaikh Crusher  
Arabian Est. Transport & Supply  
Arabian Gulf Bulk Trade  
Arabian Mix  
Arabian Mix  
Arabian Mix  
Ascon Road Construction LLC  
Bahrain Bulk Trade  
Bin Lahej Crusher  
Caspian Group  
Cemex Topmix LLC  
Cemex Topmix LLC  
Cemex Topmix LLC  
Cemex Topmix LLC  
Cemex Topmix LLC  
Demir Exports  
Demir Exports  
Dibba Marbles & Tiles  
EMAL  
Emirates Ceramics Factory  
ETA  
Fujairah Building Industries  
Fujairah National Quarry  
Fuj Rock & Aggregates  
Golden Swan Crusher  
Gulf Cement Company  
Gulf Star Energy  
Gulf Star Minerals & Aggregate LLC  
Heilbronn Contrating LLC.  
Naser Al Sayer Crushers  
National Wheel J & P LLC  
Projects Link LLC  
Raj Stones LLC

Emirates Cement Factory  
Al Ain Cement Factory  
Al Quoz Plant  
Fujairah Crushers  
Hamriya Freezone Project  
Fujairah Crushers  
Fujairah Crushers  
Fujairah Crushers  
Fujairah Crushers  
Fujairah Crushers  
Fujairah Crushers  
Al Quoz Stockpiles  
Al Aweer Stockpiles  
DIC Stockpiles  
Al Awir Project  
Fujairah Crushers  
Fujairah Crushers  
Salwa Crusher  
Al Quoz Plant  
Citimix Plant  
Grinding Mill  
Jebel Ali Plant  
Supermix Plant  
Fujairah Crushers  
Siji Crusher  
Dibba Stockpiles  
EMAL-Taweelah  
Fujairah Stockpiles  
Dubai Festival City  
Fujairah Stockpiles  
Fujairah Crusher  
Fujairah Stockpiles  
Fujairah Crusher  
RAK Factory  
Fujairah Crushers  
Fujairah Crushers  
Dubai Academic City  
Taween Crusher  
Fujairah Crushers  
Oman Project  
Fujairah Crusher

# PROJECT EXPERIENCE

---



Region Trading Aggregate  
Salbookh Crusher  
Soletanche Bachy  
United Quarries  
Western Banoona, Dhaid  
Western Banoona, AUH

Fujairah Crusher  
Fujairah Crusher  
CMW Jebel Ali Project  
Fujairah Crushers  
Fujairah Stockpiles  
Oman Stockpiles

## UNDERGROUND UTILITY SURVEY

Al Ain Municipality  
Al Ain Municipality  
Al Futtaim  
Al Ghurair City  
Al Ghurair Construction  
Al Hai & Al Mukaddam  
Al Naboodah Laing  
Arab Centre for Engg. Studies  
Arc International  
Beauty Electro Mechanical LLC  
China State Construction Engg  
Consultant HSS

Consultant HSS  
Crown House  
Damac Properties  
Damac Properties  
Dewan Architects & Engineers  
DSA Architects  
Dubai Properties  
Dubai Real Estate Corporation  
Dubai Natural Gas  
EC Harris International  
EC Harris International  
Majid Al Futtaim Properties  
Punj Llyod Ltd.  
UniPro Technical Services LLC  
Shankland Cox. Ltd.  
S.S Lootah Contracting Co.

Shibaat Al Watta(4.5 Km2)  
Al Daher 5(3.5 km X 4 Km)  
Dubai Festival City Zone 9  
East Car Park  
Mashreq Bank HQ  
American University of Shj  
Burj Dubai  
Dragon Mart-Al Warsan  
DM- Karama Branch  
Tecom  
Southern Sun Hotel @ AUH  
P 508 JA Water Front Facilities @  
Quay 9, JAFZA  
P 562 FZ – LIU @ JAFZA  
Deira City Center Residences  
Lotus Towers – Business Bay  
Dubai Marina  
The Avenue  
Plot in Wadi al Amardi  
Dubai Crystal Project  
Al Mina Project  
Dugas  
Al Kifaf 1 District 49  
Plot C-189, Abu Dhabi  
Deira City Center  
JAFZA  
Smart Height by Damac  
Al Manar Mall at RAK  
Al Duja Tower

# PROJECT EXPERIENCE

---



## Earth WORK PROJECTS

- Millennium Estates – 198 Villas (Cut, Fill & Compaction)
- The Grand Views – 498 Villas (Cut, Fill & Compaction)
- Football Stadium for Football Associations
- Plot @ Nad Al Shiba (Cut & Cart away)
- Millennium Estates (Preparation of T. Roads)
- Emirates Towers (Cut)
- The Grand Views – 498 Villas (Preparation of T. Roads)

G & CO  
Chawla Architects  
Petra Project Management  
Universal Piling  
Chawla Architects  
Bauer International  
Chawla Architects

## JV with BKS Surveys

### **Project**

Topographic Survey of 1000 Ha At Jebel Ali  
Topographic & Bathymetric survey of area  
Approx. 600 Ha, China Market  
Topographic Survey for Dubai Festival City  
(3.5 Km x 1 Km)  
Extensions of BurJuman  
Utility survey for Town Planning

### **Client**

Nakheel  
  
Nakheel  
Al Futtaim  
  
Bauer Spezialtiefbau  
Al Ain Town Planning



# PROJECT EXPERIENCE

---

## GEO-TECHNICAL INVESTIGATION PROJECTS

- Geo-technical Investigation for Construction of Villas in Plot No. 282-280 at Khawaneej Second for Mr. Khalaf Ahmad Mohamed Al Habtoor.
- Geo-technical Investigation for Desalination Plant at Kalba Desalination Plant for Sharjah Electricity and Water Authority, Kalba, UAE
- Geo-technical Investigation for Parcel ID IC2-T01 at International City Phase II & III at International City.
- Geo-technical Investigation for IND. 068 at International Media Production Zone for TECOM Investments FZ LLC.
- Geo-technical Investigation for Plot No. A02.016 at Business Bay, Dubai for Proposed 3B+G+M+39 storey tower for Baig Mohamed Iqbal Ebrahim Ruksana Mohammed Iqbal Baig.
- Geo-technical Investigation for Proposed Construction of P562 FZ Light Industrial Units at R/A 7 (Al Ahmadi House & Plot NO. B046R02) for JAFZA, Civil Engineering Department, Jebel Ali Free Zone, Dubai.
- Geo-technical Investigation for B058F01 for Water Front Facilities at Quay 9, JAFZA, Dubai, UAE- US Naval Base.
- Off Shore and On Shore Geo-technical investigation and Consultancy Services for Khatmat Quarry Port, Khatmat Quarry Company LLC, Sultanate of Oman.
- Consultancy Services for Geo-technical Investigations At STP and Related Collection and Irrigation Systems at Jumeirah Golf Estates for Palm Water KEO Consultants
- Geo-technical Investigations for Zone 14a Dubai Festival City, Dubai- UAE
- Geo-technical Investigation at international City Phase II & III on Parcel ID IC2-T02 for Al Attar Properties.
- Geo-technical Investigation for Plot No. JVC13HFRP004 at Jumeirah Village South for proposed B+G+2 Villa, Chawla Architects.
- Geo-technical Investigation for Plot No. 264-585 at Al Ghusais for Construction of G+2 Labor Accommodation – Abdulla & Associates.





## PROJECT EXPERIENCE

---

- Geo-technical Investigation for Construction of 4B+G+3P+17+HC Office Building and 4B+G+3P+17+HC residential building on Plot No. P1.F002 at Jaddaf for National Engineering Bureau.
- Geo-technical Investigation for Construction of 2B+G+23 Floors Commercial Tower for Mr. Mohamed Ahmed Ali Dadabai on Plot No. C-008-010 for Tecom.
- Geo-technical Investigation for Plot No. 394-761 at Emirates Hills for Proposed B+G+1 Villa for National Engineering Bureau
- Geo-technical Investigation for Plot No. WA02C005 at Jebel Ali Free Zone Authority, Dubai, UAE
- Geo-technical Investigation for Construction of 3B+G+3P+HC+18 Floors on Plot No. BB.BB01.19, Matex Tower at Business Bay for M/s Sobha Real Estates.
- Geo-technical Investigation for Construction of Light Industrial units on Plot No. RA/7 Al Ahmadi House-Consultant HSS, Dubai, UAE
- Geo-technical Investigation for Construction of 6B+G+M+2P+35 floors Building for H.H. Sheik Tahnon Bin Zayed Bin Sultan Al Nehyan on Plot No. BB.A03.020 at Business Bay for Hydra Properties.
- Geo-technical Investigation for Construction of Tanks at Fujairah for Fujairah Refinery, for AUDEX Ltd.
- Geo-technical Investigation for Construction RAK housing at Ras Al Khaimah – RAK Ceramics
- Geo-technical Investigation for Construction of Unipole Sign Boards for Shoof LLC.
- Geo-technical Investigation for Plot No. JVC10HMRP002 at Jumeirah Village South for proposed G+4 Residential Building, Chawla Architects.
- Geo-technical Investigation for Plot No. O-001, Al Mizin for Proposed 4B+G+30 Floors Building for Westar Properties.
- Geo-technical Investigation for DEWA 'G' Station Power plant, Jebel Ali Free Zone Authority, Dubai, UAE.
- Geo-technical Investigation for Plot No. 373-1113 in Al Barsha for Proposed 2B+G+6 Floors Building for national Engineering Bureau.



## PROJECT EXPERIENCE

---

- Geo-technical Investigation for Construction of 3B+G+3P+12 Floors Building on Plot No. BB.A06.006 at Business Bay for Sobha Properties.
- Geo-technical Investigation for plot no. CBD-32 at Al Warsan, National Engineering Bureau.
- Geo-technical Investigation for Construction of Light Industrial Units 10, 11, 13 & 14 at JAFZA, Dubai UAE – Consultant HSS
- Geo-technical Investigation for Jumeirah Beach Club resort and Spa redevelopment at Jumeirah Third for Leigh & Orange Ltd. Dubai, UAE.
- Geo-technical Investigation at International City Phase II & III on Parcel ID IC-T04- Al Attar Properties.
- Geo-technical investigation for Proposed Public Park for Dubai Municipality on Plot No. 129-140, Port Saeed.
- Off-shore Geo-technical Investigation at Khor Fakkan Power House for Sharjah Electricity and Water Authority, Khor Fakkan, UAE
- Geo-technical Investigation for Emirates Cement factory Al Ain for CDI, Al Ain, UAE.
- Geo-technical Investigation for Desalination Plant at Khor Fakkan for Sharjah Electricity and Water Authority, Modern Engineering Consultants.
- Geo-technical investigation for Fujairah building industries (Crusher) at Al Hail Area, Fujairah, UAE.
- Geo-technical Investigation for Desalination Plant at Layyah Power House for Sharjah Electricity and Water Authority, Sharjah, UAE.
- Geo-technical Investigation for Cement Factory 60km from Buraimi towards East 40km from Al Ain Border Gate, Al Buraimi Group, Oman.
- Geo-technical Investigation for The Avenue at Al Safa Street, Dubai for Meraas Development LLC.
- Geo-technical Investigation for Glenbeigh Ratoga JV at Plot Nos. Soil Investigation carried out at Plot No. WA-39, WA-40 and WA-41 at Dubai World Central.
- Geo-technical Investigation for Meraas Development LLC for Dubai Theme park at Jebel Ali.

# QUALITY ASSURANCE

---



## QUALITY ASSURANCE

# QUALITY ASSURANCE



It is NSE policy to fully implement a high quality management system, which will consistently provide products and services, which conform to the needs and standards, defined by our Clients.

Achievement of NSE Policy Statement is the responsibility of all personnel who are individually responsible for the quality of their work and to whom this policy statement has been explained. The management will ensure that relevant procedures are communicated to, understood and adhered to by all personnel.

We trust that the above profile provided the necessary information to prove that we could serve your requirements rightfully. Anything, which requires clarification, can be informed and the same shall be furnished as timely as possible.

Regards,

  
**Khurram Javed Ahmed**  
**Manager**  
**050 – 7380654**

